

Programme & Rates 2026-2027

Elephant Conservation Center

*Protecting
Elephants
in Lao PDR
since 2001*

Come visit
Laos' largest
elephant herd
in Sayaboury, the
natural Homeland
of Elephants





Rate Card 2026-2027

	Dormitory	Lakeside Classic Bungalow	Lakeside Premium Bungalow	Family Bungalow	Forest House	Deluxe Lodge
	Shared Bathroom	Shared Bathroom	Shared Bathroom	Shared Bathroom	Private Bathroom	Private Bathroom
2 DAYS - 1 NIGHT "DISCOVERY" (2DDIS)		\$220	\$240	\$220	\$230	\$390
3 DAYS - 2 NIGHTS "EXPLORATION" (3DEXP)		\$310	\$330	\$310	\$320	\$560
7 DAYS - 6 NIGHTS "CONSERVATION VOLUNTEERING" (7DECO) *** Starts 1 st March 2026*** *** Departure Every Monday*** *** 4 Participants Minimum / 16 participants maximum *** *** Minimum Age: 14 years old ***	\$620	\$800	\$820	\$800	\$980	\$1 470

	At ECC: Deluxe Lodge or Premium Bungalow + Guest House in Thongmixay District & Camping in the National Park
8 DAYS - 7 NIGHTS "BACK TO THE WILD" EXPEDITIONS	\$1 990
Accommodation: Premium Bungalow at ECC + Guest House in Thongmixay District & Camping in the National Park	
Starts with our 3 DAYS - 2 NIGHTS EXPLORATION (3DEXP) + 1 night at the ECC followed by 5 DAYS - 4 NIGHTS "BACK TO THE WILD" EXPEDITION *** 2 Participants Minimum / 4 Participants Maximum *** *** Minimum Age: 16 years old *** *** Departures: 1 st Week of Each Month Between October and April ***	

	Lakeside Classic Bungalow	Lakeside Premium Bungalow	Family Bungalow	Forest House	Deluxe Lodge
	Shared Bathroom	Shared Bathroom	Shared Bathroom	Private Bathroom	Private Bathroom
EXTRAS					
Extra Night	\$80	\$90	\$80	\$90	\$110

Discovery: 2 days - 1 night

Join us for an overnight stay and discover our Center and elephants. Welcome to your idyllic holiday destination in the Land of the Asian Elephant on the shores of a majestic lake surrounded by untouched tropical forest. During your visit at the Center you will spend a lot of time walking through our protected area. The area is forested and might not always be accessible without you getting dirty. Activities in the forest vary during the rainy season between May and September. You will be guided by a local English speaking guide and international experts.

Day 1: Travel from Luang Prabang by minivan – Boat trip – Walk through the Forest – Laotian Lunch – Nursery Visit – Hospital Visit – Observe Elephants Bathing – Encounter Elephants & Mahouts – Dinner.

Upon arrival at Nam Tien Lake, we will transfer you to the Center by **boat**. You will have time to settle into your **accommodation** before your **guide** takes you to the forest. Along the way, you will walk past the different enclosures where our main activities take place. After enjoying a **family-style traditional Laotian lunch** on a lakeside platform, you will observe bath time at the **nursery**, an area in the forest reserved for our youngest (and cutest!) elephants and their mothers.

When the elephants have drunk enough and returned to the forest, you will take the boat back to the Center for the **hospital visit**. Our **Laotian vet team** or our **biologist** will introduce you to their world, sharing information about common and uncommon injuries and treatments. This is the perfect time to ask questions about the biology and physiology of elephants.

Elephants love water! You'll get a chance to see this first hand. Elephants use **bath time** to socialize and strengthen ties within the herd. You will watch their bathing routines and interactions up close, observing their ears flapping and tails swatting while they use their trunks and trees to satisfy a nagging itch. All of the elephants at the ECC had difficult lives before we rescued them, and the pleasures of bath time are important to their recovery. Our guides will share stories and information, helping you get to know and understand our elephants better.

Now it's time for elephants to walk back to the forest. After a short trek, the mahouts will decide on a place where the elephants can **graze** for the night.

Before dinner, you'll have some **free time** to enjoy one of our many scenic **viewpoints** or paddle in a canoe or **kayak** on the lake, absorbing the magnificent world that surrounds you.

At 6:00pm, you will attend a **video presentation highlighting our conservation work**. You'll have the opportunity to interact with our elephant specialists, probing lingering questions from your day's adventures. Then it's **dinner** time, where authentic Lao cuisine is served family-style.

After dinner, you can relax or enjoy some games or delicious Lao style cocktails at the bar!

Day 2: Breakfast – Meet the Elephants in the Forest – Observe Elephants Bathing – Socialization Area Observation – Lunch.

On the second day, you will **meet up** with the elephants in the forest. After spending the night in the jungle, it is time for another bath. Enjoy strolling together with these magnificent animals in their **natural habitat**. Watch them walk, forage, scratch, and socialize. If you're lucky, you'll hear them trumpet with excitement! What are they saying?

After bath time, it's on to the **Socialization Area**. This is an area where our elephants can freely interact during much of the day. Here, we have created a **semi-natural living environment** where our elephants can enjoy being elephants. Follow our guide around the perimeter to learn more about the elephant group's fascinating dynamics. Spend time on the different raised **platforms** to see how a new herd is being formed. This rare opportunity will bring you closer to understanding elephants' natural lives, a **special learning experience rarely found in Asia**.

Lunch is served at the Center. You have some time to relax before we take you back to Luang Prabang by minivan. You can say your goodbyes to the staff at the restaurant or walk around the Center one last time.

SPECIAL NOTE:

Medical Care and "positive reinforcement" training of the elephants at the Elephant Hospital are only carried out by qualified vets. Unfortunately, you won't be able to participate in this activity. Thank you for your understanding.

This programme starts at 7:30am on day 1 and ends at about 05:30pm on day 2. We will pick you up in Luang Prabang and return you to Luang Prabang after lunch on day 2.

Choice of accommodation between lakeside private bungalow with shared bathroom, Forest House with private bathroom, or Deluxe Lodge with private bathroom. Please visit our website for more information.

Public Price

- In US Dollar per person: \$220 (Classic Bungalow), \$240 (Premium Bungalow), \$230 (Forest House), \$390 (Deluxe Lodge)
- 1-4 years old: free of charge if sharing a bungalow with parents;
- 5 - 10 years old: 50% discount if sharing bungalow with parents,
- Over 10 years: full charge.

The Price Includes

- Round-trip transfer from Luang Prabang to ECC
- English speaking team on site
- Set menu meals: Day 1 (L, D), Day 2 (B, L)
- Unlimited drinking water refill
- Accommodation: Private Bungalow (Shared Bathroom), Forest House (Private Bathroom), or Deluxe Lodge (Private Bathroom).
- Activities as described

The Price Excludes

- Personal expenses (soft drinks, snacks, tips, etc.)
- Travel insurance
- Bank transfer fees
- Anything not mentioned in 'The price includes'

What to Bring to The ECC:

- A cap, sunscreen & a large refillable water bottle
- Long trousers and long shirts or a jacket to go to the forest (to avoid scratches and insect bites)
- A backpack to carry your belongings during activities
- Good quality trekking shoes (recommended)
- Rain jacket, especially during the rainy season (June to November)
- Mosquito repellent



Exploration: 3 days - 2 nights

By joining our Exploration programme you will fully experience the peaceful and beautiful world of the Asian elephant. Not only will you enjoy a relaxing stay in the Nam Tien protected area but you will also learn all you want to know about Asia's most iconic creature! You will receive expert information about the condition of the Asian elephant, its biology, cultural importance and the challenges of the species' conservation. You will have the opportunity to observe our elephant herd in its natural habitat.

During your visit at the Center you will spend a lot of time walking through our protected area. The area is forested and might not always be accessible without you getting dirty. Activities in the forest vary during the rainy season between May and September. You will be guided by a local English speaking guide and international experts.

Day 1: Travel from Luang Prabang by minivan – Boat trip – Walk through the Forest – Laotian Lunch – Nursery Visit – Hospital Visit – Observe Elephants Bathing – Encounter Elephants & Mahouts – Dinner.

Upon arrival at Nam Tien Lake, we will transfer you to the Center by **boat**. You will have time to settle into your **accommodation** before your **guide** takes you to the forest. Along the way, you will walk past the different enclosures where our main activities take place. After enjoying a **family-style traditional Laotian lunch** on a lakeside platform, you will observe bath time at the **nursery**, an area in the forest reserved for our youngest (and cutest!) elephants and their mothers.

When the elephants have drunk enough and returned to the forest, you will take the boat back to the Center for the **hospital visit**. Our **Laotian vet team** or our **biologist** will introduce you to their world, sharing information about common and uncommon injuries and treatments. This is the perfect time to ask questions about the biology and physiology of elephants.

Elephants love water! You'll get a chance to see this first hand. Elephants use **bath time** to socialize and strengthen ties within the herd. You will watch their bathing routines and interactions up close, observing their ears flapping and tails swatting while they use their trunks and trees to satisfy a nagging itch. All of the elephants at the ECC had difficult lives before we rescued them, and the pleasures of bath time are important to their recovery. Our guides will share stories and information, helping you get to know and understand our elephants better.

Now it's time for elephants to walk back to the forest. After a short trek the mahouts will decide on a place where the elephants can **graze** for the night.

Before dinner, you'll have some **free time** to enjoy one of our many scenic **viewpoints** or paddle in a canoe or **kayak** on the lake, absorbing the magnificent world that surrounds you.

At 6:00 pm, you will attend a **video presentation highlighting our conservation work**. You'll have the opportunity to interact with our elephant specialists, probing lingering questions from your day's adventures. Then, it's **dinner** time, where authentic Lao cuisine is served family-style.

After dinner you can relax or enjoy some games or delicious Lao style cocktails at the bar!

Day 2: Breakfast – Meet the Elephants in the Forest – Observe Elephants Bathing – Socialization Area Observation – Lunch – Afternoon Bath – Positive Reinforcement Training – Vet Check – Dinner.

On the second day, you will **meet up** with the elephants in the forest. After spending the night in the jungle, it is time for another bath. Enjoy strolling together with these magnificent animals in their **natural habitat**. Watch them walk, forage, scratch, and socialize. If you're lucky, you'll hear them trumpet with excitement! What are they saying?

After bath time, it's on to the **Socialization Area**. This is an area where our elephants can freely interact during much of the day. Here, we have created a **semi-natural living environment** where our elephants can enjoy being elephants. Follow our guide around the perimeter to learn more about the elephant group's fascinating dynamics. Spend time on the different raised **platforms** to see how a new herd is being formed. This rare opportunity will bring you closer to understanding elephants' natural lives, a **special learning experience rarely found in Asia**.

Lunch is served at the Center. In the afternoon, you can observe the elephants having their **afternoon bath**.

You will then meet our **mahouts and vet team** again as they will conduct a **"Target Training" session**. All our elephants are being trained using **'positive reinforcement'** techniques to facilitate any necessary treatments and to reduce the stress that these treatments or routine checks can give to them. We offer you the chance to follow their work from a safe distance.

Day 3: Breakfast – Trekking to observe free-roaming male elephants – Information Center – Lunch.

On the third day, you will follow your guide to observe **free-roaming male elephants**. The ECC is the only facility in Laos caring for and socializing male elephants, as they are typically considered more challenging to manage and are rarely presented in tourist camps. You'll have the opportunity to observe some of our bull elephants, learn about their unique characteristics, and gain insight into the progress of our male elephant socialization programme.

Once back to the Center, you will have the opportunity to improve your elephant knowledge at our **Information Center**, where we have created a series of displays about the Asian elephant's biology, social life, ecology, and cultural significance. You'll also learn about elephants' vital role in Asian history and their symbolic associations. Time spent at the Information Center with our guide or on your own will help you better understand both the importance of elephants as a **keystone species** within their ecosystem and the intimate relationship they have shared with humans in Asia for thousands of years.

Lunch is served at the restaurant. You have some time to relax before we bring you back to Luang Prabang by minivan. You can say your goodbyes to the staff or walk around the Center one last time.

SPECIAL NOTE:

Medical Care and “positive reinforcement” training of the elephants at the Elephant Hospital are only carried out by qualified vets. Unfortunately, you won't be able to participate in this activity. Thank you for your understanding.

This programme starts at 7:30am on day 1 and ends at about 05:30pm on day 3. We will pick you up in Luang Prabang and return you to Luang Prabang after lunch on day 3.

Choice of accommodation between lakeside private bungalow with shared bathroom, Forest House with private bathroom, or Deluxe Lodge with private bathroom. Please visit our website for more information.

Public Price

- In US Dollar per person: \$310 (Classic Bungalow), \$330 (Premium Bungalow), \$320 (Forest House), \$560 (Deluxe Lodge)

Child Policy

- 1-4 years old: free of charge if sharing a bungalow with parents;
- 5 - 10 years old: 50% discount if sharing bungalow with parents,
- Over 10 years: full charge.

The Price Includes

- Round-trip transfer from Luang Prabang to ECC
- English speaking team on site
- Set menu meals: Day 1 (L, D), Day 2 (B, L, D), Day 3 (B, L)
- Unlimited drinking water refill
- Accommodation: Private Bungalow (Shared Bathroom), Forest House (Private Bathroom), or Deluxe Lodge (Private Bathroom).
- Activities as described

The Price Excludes

- Personal expenses (soft drinks, snacks, tips, etc.)
- Travel insurance
- Bank transfer fees
- Anything not mentioned in 'The price includes'

What to Bring to The ECC:

- A cap, sunscreen & a large refillable water bottle
- Long trousers and long shirts or a jacket to go to the forest (to avoid scratches and insect bites)
- A backpack to carry your belongings during activities
- Good quality trekking shoes (recommended)
- Rain jacket, especially during the rainy season (June to November)
- Mosquito repellent



Conservation Volunteering:

4-16 PEOPLE - DEPARTURE EVERY MONDAY

STARTING 1ST MARCH 2026

Conservation Volunteering is a 7-day programme designed for participants seeking a hands-on role in Laos' elephant conservation efforts. Operating with groups of 4-16 people and guided by ECC specialists, the programme merges scientific learning, practical conservation tasks, and cultural immersion.

During your first days at the ECC, you will discover elephant behaviour, welfare standards, and ECC's pioneering rewilding and research philosophy. You will then take part in structured workshops, habitat work, behavioural studies, veterinary activities, and cultural exchanges. Days are purposeful and immersive: collect tree seeds and elephant dung to support habitat restoration, observe and record social dynamics at the Socialisation Area, prepare traditional elephant tonic balls, shadow veterinarians, and engage with ECC's research staff. Evenings offer reflection, community interaction, games and optional activities such as kayaking or yoga. This programme is ideal for students, animal-care enthusiasts, and travellers looking for meaningful, science-driven engagement with one of Asia's leading elephant conservation organisation.

Days 1-3: ECC "Exploration": Foundations of Elephant Care

Your expedition begins in Luang Prabang with a road transfer to the Elephant Conservation Center (ECC). For three days and three nights, you will follow ECC's standard Exploration Programme. These days provide essential grounding in ECC's ethics, elephant behaviour, positive-reinforcement training, and socialisation practices. Guided walks, talks, hospital visits, nursery observations, and socialisation area sessions help you understand how elephants live within natural forest habitats. You will also receive your introduction to elephant conservation and prepare social media storytelling content as part of your educational assignment. Evenings include briefings, dinner, and optional activities such as kayaking, sunset viewing, yoga, or games. The third afternoon ends with your first lecture on ECC's research framework and preparation for deeper conservation work.

-- SEE OUR "EXPLORATION" DESCRIPTION --

Day 4: Workshops & Behaviour Studies

After breakfast, begin your hands-on conservation immersion. Start with preparing traditional Lao (Tai Lue) elephant tonic balls using natural ingredients. In the afternoon, attend a preparatory lecture on behavioural data collection at the Elephant Hospital & Volunteers' Workspace, followed by field observation at the Elephant Bath Area. This day emphasizes ethology basics and welfare-first observation of elephants in the forest. Evenings remain relaxed, with dinner at the restaurant and free-time activities.

Day 5: Behavioural Data Collection & Rewilding Protocols

Begin with behavioural data collection at the Socialisation Area alongside an ECC biologist. Learn to use ethograms and observe social dynamics between elephants. After lunch, join a practical workshop in tree nursery management or bamboo handicraft production. In the late afternoon, you will be introduced to ECC's leading elephant rewilding protocols at the Elephant Hospital, discussing tracking, forest adaptation, and welfare indicators. The day ends with dinner and free time.

Day 6: Habitat Restoration & Veterinary Insights

Today you enter the forest for practical habitat-restoration tasks: collecting tree seeds and elephant dung used as fertilizer. After lunch, visit the ECC Permanent Exhibition to deepen your understanding of elephant ecology and conservation history. Later, join ECC veterinarians for an introduction to parasitology through white blood cell count analysis. End the day with additional elephant observation or observing medical training sessions. A farewell dinner and games close this intensive learning day.

Day 7: Cultural Immersion & Final Presentations

Enjoy a slow morning at the Center – a final moment to appreciate the forest and go for a farewell walk with elephants in their morning environment. Late morning is dedicated to your final assignment: preparing and sharing photos, reels, or short posts summarising your conservation experience. After lunch, reflect with your group and ECC staff before embarking for your transfer back to Luang Prabang with the satisfaction of having contributed to tangible conservation efforts while gaining real-world field experience.



7 days - 6 nights



SPECIAL NOTE:

The itinerary may be adapted depending on weather conditions, elephant welfare considerations, staff availability, or other logistical factors. All activities follow ECC's strict hands-off, welfare-first principles. A moderate physical condition is recommended.



Public Price

- In US Dollar per person: **\$620 (Dormitory)**

Accommodation Options

\$800 (Classic Bungalow), \$820 (Premium Bungalow), \$980 (Forest House), \$1 470 (Deluxe Lodge)

Group Size & Age Policy

- Minimum participants per session: 4
- Group size: 4-16 participants
- Open to individuals aged 16 and older.

The Price Includes

- Round-trip transfer from Luang Prabang to ECC
- English speaking team on site
- Set menu meals: Day 1 (L, D), Day 2 - 6 (B, L, D), Day 7 (B, L)
- Unlimited drinking water refill
- Accommodation in Shared Dormitory with Shared Washrooms (Alternative Accommodation Options Available)
- Activities as described

The Price Excludes

- Personal expenses (soft drinks, snacks, tips, etc.)
- Visa & Travel insurance
- Bank transfer fees
- Anything not mentioned in 'The price includes'

What to Bring to The ECC:

- A cap, sunscreen & a large refillable water bottle
- Long trousers and long shirts or a jacket to go to the forest (to avoid scratches and insect bites)
- A backpack to carry your belongings during activities
- Good quality trekking shoes (recommended)
- Rain jacket, especially during the rainy season (June to November)
- Mosquito repellent



Back to the Wild: 8 days - 7 nights

2-4 PEOPLE - 1ST WEEK OF EACH MONTH BETWEEN OCTOBER AND APRIL

Back to the Wild is an 8-day conservation expedition designed for travelers who want their journey to contribute to real elephant protection in Laos. Operating with small groups and led by ECC specialists, the programme blends hands-on conservation tasks with meaningful cultural exchange. You'll begin with three days at the Elephant Conservation Center (ECC) to understand elephant behaviour, welfare, and the Center's rewilding approach. From there, you head off-grid into the 192,000-hectare Nam Pouy National Protected Area, home to Laos' second-largest wild elephant population. Days in the field are active and purposeful: trek through elephant habitat with ECC's monitoring team, assist with non-invasive health checks, deploy and check camera traps, and camp beneath the forest canopy. Along the way, connect with mahouts and local communities through shared meals, school visits, and time at spiritual sites. The result is a rare, mission-led experience that balances safety, ethics, and adventure—ideal for nature-minded travelers and for agents seeking authentic, low-impact product with real conservation value.

Days 1-3: ECC "Exploration": Foundations of Rewilding

Your expedition starts in Luang Prabang with a road transfer to the Elephant Conservation Center (ECC) in Sayaboury, your base for three days and three nights of preparation and discovery. These introductory days are designed to ground you in ECC's ethics and methods while giving you time to acclimatise and meet the team. In and around the Center, you'll learn how the ECC cares for Laos' elephants and prepares them for a life closer to the forest. Guided walks and talks introduce elephant behaviour, positive-reinforcement training, social enrichment, and the role of veterinary care in rehabilitation. You'll also gain an overview of the tracking tools and data the team uses to monitor released animals – laying the groundwork for the fieldwork ahead.

Evenings are relaxed, with briefings, Q&A sessions, and time to review maps of the Nam Pouy landscape. On Day 3 afternoon, you'll receive a mission briefing and help prepare vehicles and equipment for departure.

-- SEE OUR "EXPLORATION" DESCRIPTION --

Day 4: Overland to Thongmixay: Into Elephant Country

Leaving the ECC early, you travel southwest across Sayaboury Province towards Thongmixay, with interpretive stops at natural and cultural points of interest that place the coming fieldwork in context. A midday trek in the Ban Phonesavath protected area provides your first taste of the region's mixed evergreen and secondary forests and the practical fieldcraft of moving quietly and safely through elephant habitat.

In the afternoon, continue toward two known wild-elephant zones around Paklay before reaching a third area in Thongmixay – routes often used by herds that move between river valleys and foothills. As daylight fades, share dinner with mahouts in Thongmixay and overnight at a simple local guesthouse. These community moments are integral to the programme: they connect conservation science with the knowledge and traditions of the people who live with elephants.

Day 5: Nam Pouy National Protected Area: First Checks & Forest Camp

After breakfast, visit a sacred forest stupa before entering the Nam Pouy National Protected Area, a vast, rugged landscape of ridges, streams, and bamboo glades. With ECC's vet and monitoring staff, take part in a scheduled, non-invasive elephant health check—an opportunity to observe protocols that minimise stress while gathering information essential to welfare and rewilding success. Following a picnic by the river, trek deeper into Huay Sa Hom to deploy camera traps at pre-selected locations such as salt licks, stream crossings, or narrow passes where wildlife activity concentrates. By late afternoon, establish a low-impact forest camp and go over the next day's route and safety procedures. Dinner is cooked over simple stoves; the night soundscape – cicadas, frogs, and the rustle of bamboo—reminds you that you're fully off-grid.

Day 6: Monitoring Circuit: Trap Checks & Wildlife Lookouts

Rise at dawn for a field breakfast and set out on a monitoring circuit. Depending on conditions, the team may repeat health observations or focus on fresh signs: tracks, dung, and feeding marks that reveal herd movements and habitat use. At midday, break for lunch in a shaded clearing before hiking to retrieve memory cards from your camera traps. Stopping at elevated viewpoints and known observation spots, you'll discuss how topography, water, and seasonal food shape elephant behaviour and route choice.

By late afternoon, return to Thongmixay for much-appreciated showers. Dinner is hosted by a traditional mahout family – a chance to hear first-hand stories from people whose livelihoods, identity, and spirituality are intertwined with elephants.

Day 7: Community & Culture: School Visit and Back to ECC

After breakfast, visit a local school with ECC staff to support environmental education – sharing age-appropriate materials and conversations that build pride in local wildlife and protected areas. This outreach complements the field component by investing in the next generation of conservation stewards. After lunch, begin the overland return towards Sayaboury, again pausing at cultural or natural landmarks that round out your understanding of the province. Arriving at the ECC by evening, share a final dinner with the team and settle in for a well-earned night's rest.

Day 8: Departure to Luang Prabang

Enjoy a slow morning at the Center – time for last questions, photo sharing, or a walk by the lake – before your scheduled transfer back to Luang Prabang in the early afternoon. Your expedition ends with the satisfaction of having contributed to on-the-ground conservation while experiencing one of Southeast Asia's least-visited protected forest.

SPECIAL NOTE:

The field itinerary is adaptive and may vary slightly with weather, road conditions, and wildlife movements.

The Nam Pouy section includes uneven terrain, heat, humidity, insects, and basic camping; suitable fitness and appropriate gear are essential.

Small-group departures help minimise impact while maximizing learning and safety.



Public Price

- In US Dollar per person: \$1,990 Premium Bungalow or Deluxe Lodge at ECC (depending on availability) + guest house & camping

Minimum Participants

- The programme requires a minimum booking of 2 people (and a maximum of 4) to be confirmed.

Age Requirement

- Open to individuals aged 16 and older.

The Price Includes

- Round-trip transfer from Luang Prabang to ECC,
- Round-trip transfer from ECC to Nam Pouy National Park,
- English speaking team on site
- Set menu meals: Day 1 (L, D), Day 2-7 (B, L, D), Day 8 (B, L)
- Unlimited drinking water refill
- Accommodation options: Classic or Premium Bungalow (Room & Shared Bathroom), Forest House (Room & Private Bathroom), or Deluxe Lodge (Room & Private Bathroom).
- Tools and equipment for field work
- Activities as described (May vary. Read Special Note)

The Price Excludes

- Personal expenses (soft drinks, snacks, tips, etc.)
- Travel insurance
- Bank transfer fees
- Anything not mentioned in 'The price includes'

What To Bring to The ECC:

- A cap, sunscreen & a large refillable water bottle
- Long trousers and long shirts or a jacket to go to the forest (to avoid scratches and insect bites)
- A backpack to carry your belongings during activities
- Good quality trekking shoes (recommended)
- Rain jacket, especially during the rainy season (June to November)
- Mosquito repellent

Accommodation Options



CLASSIC LAKESIDE BUNGALOW

Nestled beside the tranquil Nam Tien Lake, our bungalows offer a cozy retreat with the option of a double or twin room. Perfect for unwinding and relishing the breathtaking sunset views on a private balcony.



1 - 2



shared
bathroom



fan



Accommodation Options



PREMIUM LAKESIDE BUNGALOW

On the shores of Nam Tien Lake, our bungalows offer a restful, nature-focused stay with your choice of double or twin setup. Each features a private balcony—perfect for soaking up sunset over the water. New for 2025, our Premium bungalows add contemporary comforts while preserving the same close-to-nature character and uninterrupted lake views.



Accommodation Options



FAMILY BUNGALOW

Set beside tranquil Nam Tien Lake, our Premium Family Bungalows (1-4 guests) pair contemporary comfort with a light footprint—ideal for parents with children or friends traveling together. Each bungalow offers a flexible setup (double or twin), and a private balcony made for sunset-watching over the water. Built in 2025, they keep the same close-to-nature character and uninterrupted lake views, with modern touches that make family stays easy and relaxed.



1-4



private
bathroom



fan



private
WIFI

Accommodation Options



FOREST HOUSE

Tucked away amidst lush rainforest greenery, the house has 4 rooms to choose from. Two rooms feature a double bed and single bed, and the other two have one double bed. Enjoy a private balcony overlooking the landscape – ideal for families or groups seeking their own space.



1-10



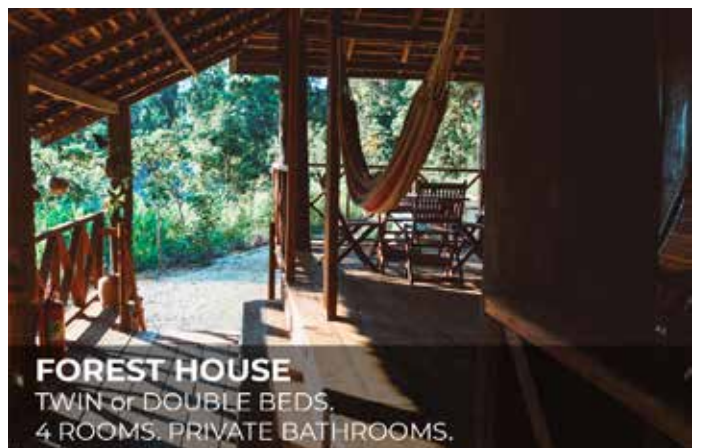
private
bathroom



fan



private
WIFI



Accommodation Options



DELUXE LODGE

Experience luxurious modern wooden lodges, each fitted with one double bed and two twin beds. Enjoy exclusive infinity views of the serene Nam Tien lake from your private balcony, relishing seclusion from neighboring bungalows. Our deluxe cabins offer a refined retreat immersed in Laos' natural beauty.



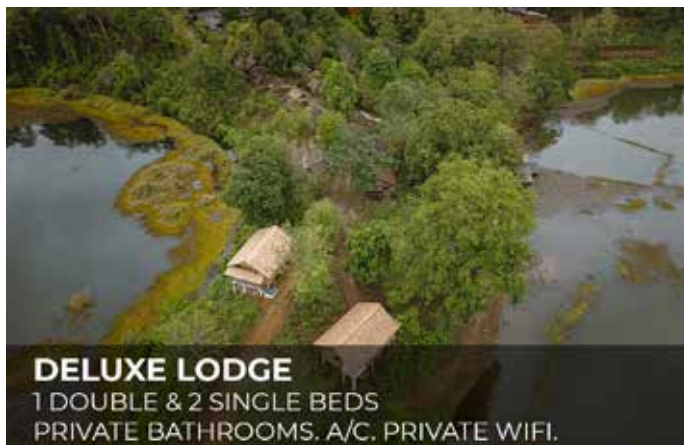
private
bathroom



aircon
/ fan



private
WIFI



Accommodation Options



DORMITORY

Nestled on the shores of Nam Tien Lake, our new volunteer dormitory offers simple, comfortable accommodation in a friendly, shared setting. With four rooms of four bunk beds each, it welcomes up to 16 volunteers. Ideally located within walking distance of the Volunteers' Workshop, the ECORE workspace and the ECC main site, it offers peaceful lake views and an inspiring place to relax after a day in the field.



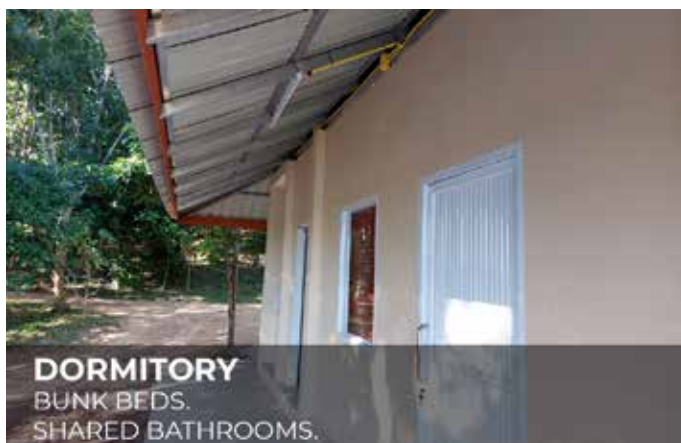
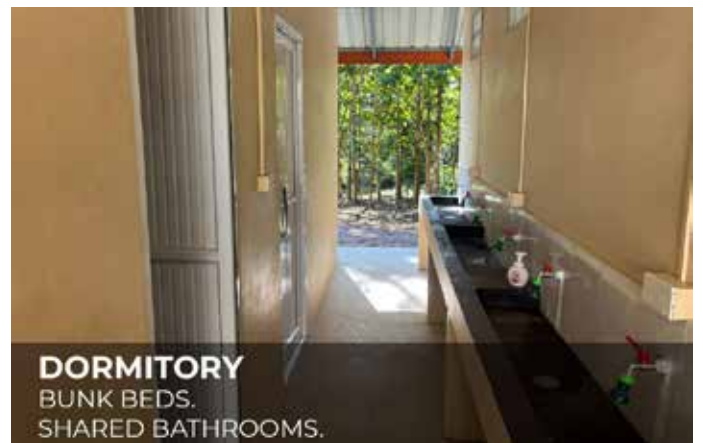
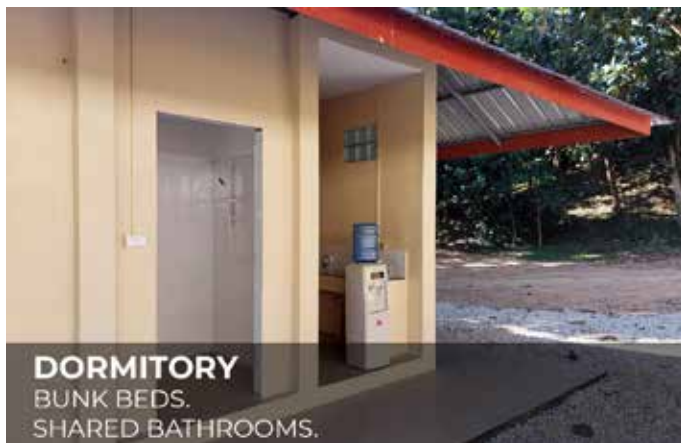
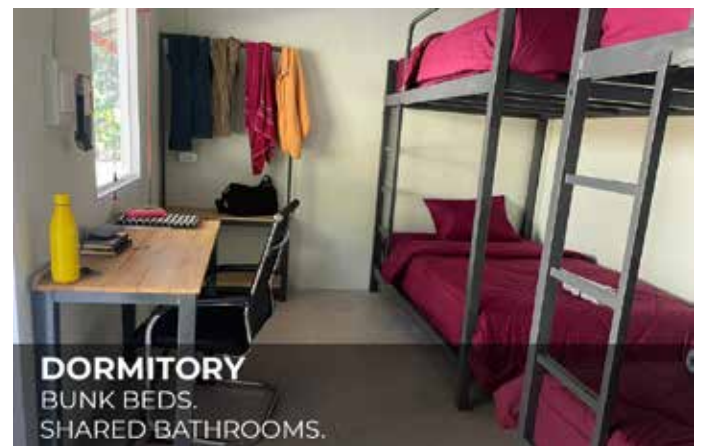
1 - 16



shared
bathroom



fan



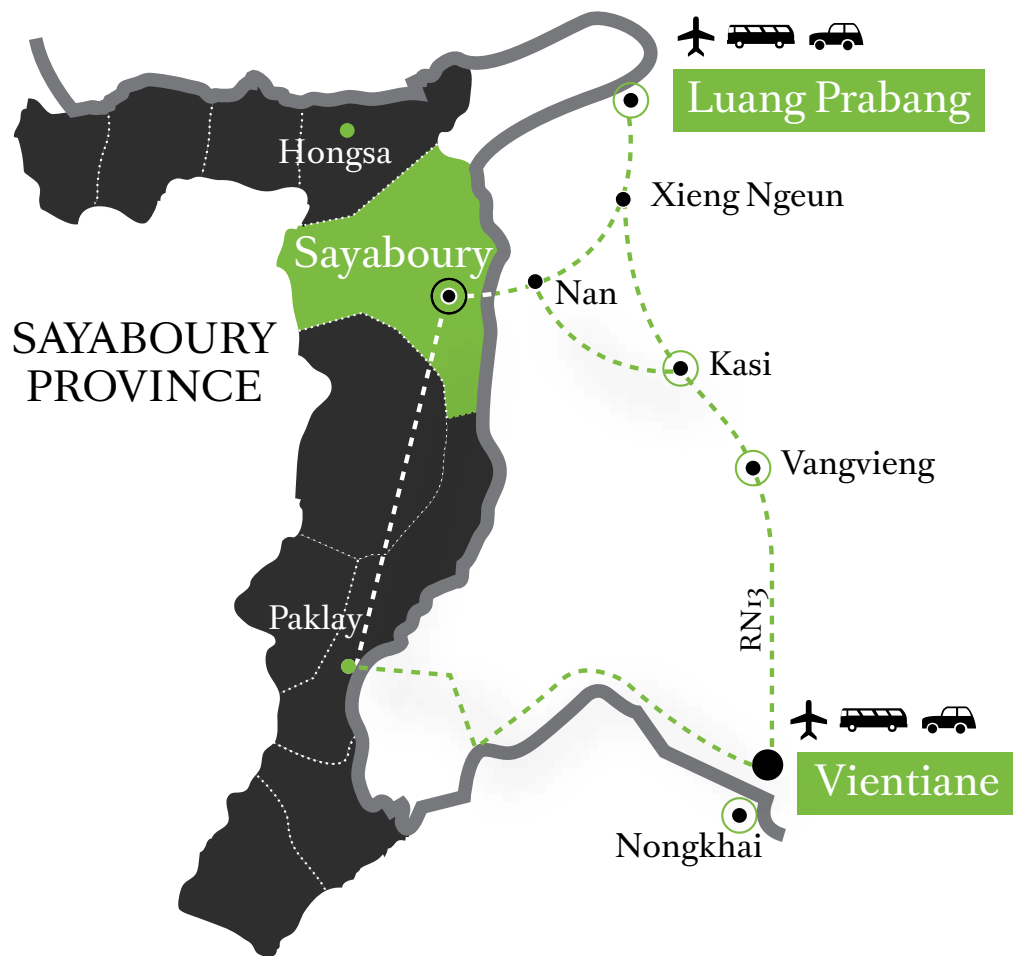


- ↖ Reproduction area
- Enrichment area
- ↓ Nursery
- ↑ Socialization Area



elephant
conservation
center

Access Map



LAO PDR



How to get there?

FROM/TO LUANG PRABANG

From Luang Prabang ECC minivan departs from the post office on the main street daily at 7:30am, and returns daily to Luang Prabang, arriving approximately at 5:30pm. The journey takes approximately 2.5 to 3 hours.

FROM/TO VIENTIANE

In Vientiane: Sakura Minivans (Sikhay station, pass the airport).
Departures at 7:00am, 8:00am and 10:00am.

In Sayaboury: Sakura Bus Station.
Departures at 7:00am, 8:00am and 10:00am.
The journey takes approximately 7 hours.

Or fly to Luang Prabang, Lao Airlines and Lao Skyway have several departures daily, and board the ECC minivan the next morning.

FROM/TO VANGVIENG

In Sayaboury: Public Buses from the Bus Station.
Departures at 3:00pm.

In Vangvieng: Minivan from Vangvieng bus station.
Departures at 10:30am (reservation required).



Luang Prabang Visitor Center
Manthatoulat Road (Mekong)
Ban Pakham, Luang Prabang
TEL: +856(0)71 25 23 07

Elephant Conservation Center
Nam Tien Lake,
Sayaboury Province, Lao PDR
TEL: +856 (0)20 96 59 06 65

www.elephantconservationcenter.com
Facebook: elephant conservation center
Instagram: #ecc_elephants
marketing@elephantconservationcenter.com

MEDIA QUOTES

“Ici (...) les éléphants vivent en paix.”

– Le Monde

“ECC rescues elephants from the logging industry”

– The Guardian

“The Centre offers visitors a unique insight into the lives of these majestic creatures in a natural setting”

– Lonely Planet

“The work of the ECC (...) offers some hope for the future survival of Laos’ largest mammal.”

– The Diplomat

“A chance to observe the elephants from morning until evening”

– Lonely Planet

“The ECC team are now working towards their rewilding goal”

– The Telegraph UK

“ECC is a bright light in an increasingly dark landscape for wildlife conservation in the region”

– Lonely Planet

“El Centro de Conservación de Elefantes en Sayaboury se dedica a la protección y recuperación de los paquidermos”

– El Pais

“ECC and Lao Tourism welcome 13 rescued elephants”

– We Are Lao

“Elephant Conservation Center is a memorable experience”

– Wanderlust

“An innovative project to utilise Laos’ elephant experts in service of protecting the country’s natural treasures”

– Geographical

“One of the world’s best places to see elephants”

– Wanderlust

“Meet and interact with elephants the ethical way at the Elephant Conservation Center”

– The Independent

“A true sanctuary”

– Travel3sixty

“The ECC team works to protect the Asian elephant from extinction”

– NHK World

“Elephant Conservation Center sets a sustainable example”

– The Outdoor Journal

“The ECC is not your typical tourist elephant camp. It is run by people with a passion for the animals”

– Lonely Planet

“Through a partnership with the Smithsonian Institute, the ECC has established a successful breeding program”

– The Diplomat

“El Centro de Conservación de Elefantes es un brote verde en medio del turismo convencional”

– El Pais

“Lao’s only sanctuary that offers an undisturbed natural environment with professional staff and world-class facilities”

– We Are Lao

“The local mahouts genuinely care for their elephants’ survival”

– The Outdoor Journal

“The ECC breeding program seeks to (re)create sustainable breeding populations in the wild”

– The Diplomat

Wanderlust

Le Monde

THE INDEPENDENT

the guardian

THE DIPLOMAT

The Telegraph

EL PAIS

Geographical

GRANTS REPORTAGES

Newsweek

lonely planet

TERRA DARWIN

herald scotland

3sixty

OUTDOOR

the yak

FUSION

water edge

Action Asia

L'ES

LE MATIN

itv

NHK WORLD

arte

6

ZDF

2

KBS

ONWS

rtbf

n.p.r.

C8

TF1

Terms & Conditions

CURRENCY

All amounts mentioned in this rate card are stated in US Dollars, but are occasionally calculated in other currencies - especially when using a credit card.

BOOKING

All clients are deemed to have read these terms and conditions and have signed a reservation form which must be made directly between the customer and the Elephant Conservation Center (ECC). The booking includes the number of participants, a list of participants' names incl. title (Ms., Mr.), nationality and passport numbers prior to the departure. To secure a booking, ECC requires a completed booking containing all relevant information detailed above by e-mail. Clients booking are deemed to accept these terms and conditions and sign a waiver when boarding our minivan to the Center. A booking is accepted and a contract is entered into as soon as ECC issues a written confirmation of the booking. The booking will be secured upon reception of the payment (see below). If clients are not paying the booking in a timely manner, ECC reserves itself the right to cancel the booking.

PAYMENT

An invoice will be issued with the confirmation of the booking and the submission of the participants' details as stated above. Payments can be made by bank transfer or Credit Card which will incur a bank fee, or cash (at the ECC). Account details are given on the booking confirmation. Note that all bank transfer fees have to be covered in full by the client.

In case of a payment being made later than 90 days after the invoice is sent, a penalty of 10% of the total invoice will be applied.

CANCELLATION (ALL SEASONS)

ECC Cancellation policy is as follows:

- Cancellation up to 15 days before arrival: 100% refund (excluding bank fees)
- Cancellation between 14 and 5 days before arrival: 50% refund (excluding bank fees)
- Cancellation less than 5 days before arrival or no-show: no refund

Season note: ECC is closed for 4 days during Lao New Year (April). We recommend booking early in high season (November–May).

CHILD POLICY

- 1 - 4 years old: free of charge with no supplement single, sharing the room with parents,
- 5 - 10 years old: 50% discount with no supplement single, sharing the room with parents,
- Over 10 years: full charge

TOUR LEADER AND FOC POLICY

- Lao National guide will be charged 30\$ / night (per person),
- International Tour Leader (and/or teachers/supervisors) will be charged 50% of the public price (per person). We do not offer FOC.

SINGLE SUPPLEMENT

Accommodation rates are based on double occupancy. Agencies requiring single occupancy will be charged a single supplement of 50\$ per accommodation from 6 PAX onwards, which reflects the additional cost of a room occupied by one person.

CANCELLATION BY ECC

ECC reserves the right to cancel any trip due to reasons beyond its control (i.e.: natural disasters or political instability). In such a case ECC will refund monies received in full (minus bank transfer fees).

PASSPORTS AND VISAS

Clients must carry a valid passport and obtain the relevant visas when traveling with ECC. We cannot accept responsibility if entry is denied to Laos or any other country due to incorrect visa or passport documentation.

INSURANCE

ECC guarantees that all vehicles it owns are insured as commercial passenger vehicles. Insurance coverage does not apply after the passengers have exited the vehicle. A private travel insurance is compulsory for all people traveling with ECC. Your travel insurance must provide cover against personal accident, medical expenses, emergency repatriation and personal liability. We also advise to contract insurance coverage against cancellation, curtailment, and loss of luggage and personal effects. The participants must be aware that during the course of the trip certain risks and dangers may occur, including but not limited to hazards of kayaking, hiking, or driving in a motor vehicle or boat, snakes, insects and other wildlife and proximity of elephants. It may also involve an accident or illness in remote places without appropriate facilities, or be caused by the forces of nature. The client agrees to assume all risks associated with the trip and agrees that no liability will be attached to our company or its outfitter, employees or agent, or to any member of the tour group. ECC accepts no liability in respect of death, personal injury, illness or delay of the passenger, or for any loss or damage to the property of the participant during the course of the trip, however caused.

COMPLAINTS

If a client has a complaint about the tour, he or she must make it known to the tour guide (leader) as soon as possible so that he/she is able to take appropriate action at the earliest opportunity. If the client is not satisfied with our response and he/she feels his or her enjoyment of the tour will be significantly affected the client should contact our manager at ECC to discuss how we might best resolve the problem. If the client remains unsatisfied after return from the tour, we must be notified in writing within 30 days.

RESPONSIBILITY

When booking a stay at ECC, the client understands that ECC is established in a forested area of Laos where the standards of accommodation, transport, safety, hygiene, level of infrastructure development and medical facilities, and telecommunication services are not necessarily the same as one may be used to at home, or one would find on a conventional holiday. This type of stay inherently involves a higher level of personal risk than a 'conventional holiday'. ECC, the Government of Laos and the Lao National Tourism Administration cannot accept any responsibility for accidents, injuries, death, or loss of personal effects. The client understands that during the course of the stay certain events may occur, including, but not limited to, accident or illness in remote places without medical facilities, political instability and the forces of nature. The client agrees to assume all risks associated with the journey to the maximum extent permitted by law. Each client acknowledges that staying at ECC requires a degree of flexibility, and understands that the itinerary, accommodation and modes of transport are subject to change without prior notice due to local circumstances. Should ECC deem it advisable to amend an itinerary for any reason, it may do so by shortening, varying or re-routing any trip. These changes can incur additional expenses that may be charged to the client, if the reason for any alteration is outside control from ECC. While traveling with ECC, the client agrees to accept the authority of the leader or local operator at all time. He/she is aware that travel within a group may involve compromise to accommodate the diverse desires and physical abilities of group members. The client understands that ECC reserves the right to decline the participation of any person as a member of the group at any time. The client acknowledges that ECC contracts a network of companies, government agencies and individuals throughout the country to assist in the running of its stays. To the best of ECC knowledge, these third parties are qualified to perform the duties they are contracted to perform. However, ECC will not be held liable for any injury, damage, loss, delay or irregularity that may occur due to the behaviour of these third parties. ECC will not accept responsibility or liability for any traveller who contravenes any law or regulation of Lao PDR. No employee, servant or agent of ECC has authority to alter these conditions.











**elephant
conservation
center**

Luang Prabang Visitor Center
Manthatoulat Road
(Mekong Riverside)
Ban Pakham, Luang Prabang, Lao PDR
lp@elephantconservationcenter.com
TEL: +856(0)20 96 59 06 65

Elephant Conservation Center
Nam Tien Reservoir, Sayaboury District
Sayaboury Province, Lao PDR
elephantconservationcenter@gmail.com
www.elephantconservationcenter.com
Facebook: elephant conservation center
Instagram: #ecc_elephants

